

BRAVE



ENSTA
Bretagne

Sensors

- Furuno WS200 Weather Station (Wind Sensor, GPS, Compass)



- GoPro Camera for obstacle detection



- Razor IMU (Compass and tilt angle)



Actuators

- Servo-motor to steer the rudder



- Two RMG servo-winches to sheet the jib and the main sail



Main characteristics

- 2.6 metres long
- 1 metre draught
- 25 Kilograms mass
- Carbon fibre composite

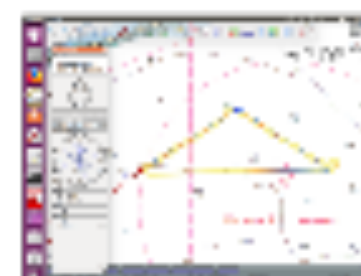
Embedded computer

- Intel Compute Stick



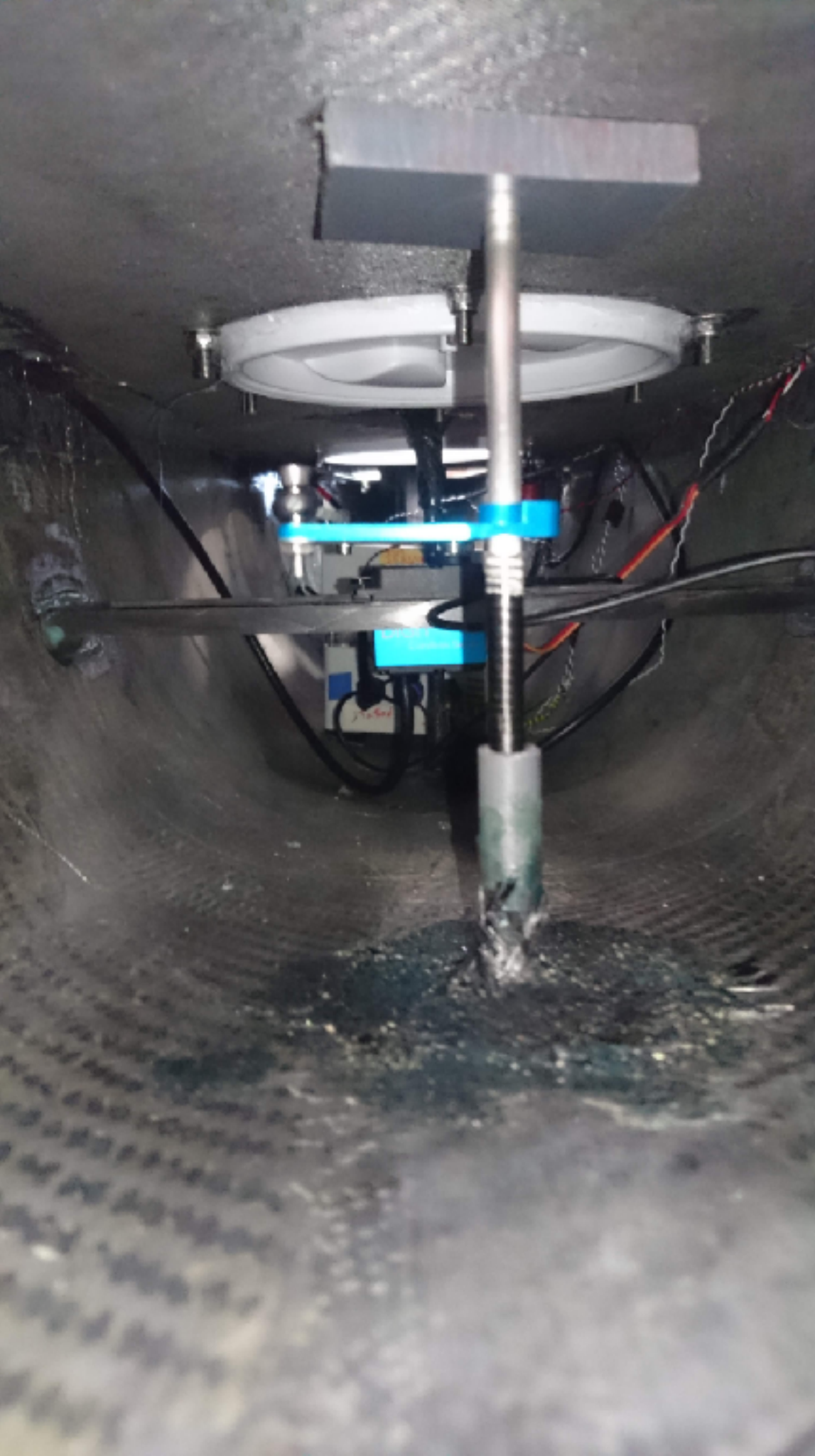
Communication

- Wifi & 4G - Monitoring with OpenCPN



- RC controlled





MECHANICAL CONCEPTION





ELECTRONICS CONCEPTS



AREA SCANNING



Position
 50 49.320 N
 001 18.785 W

Meters

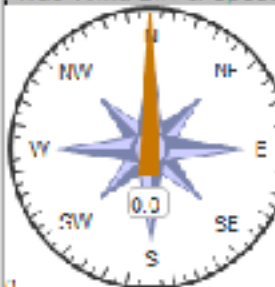


STW
 0.00

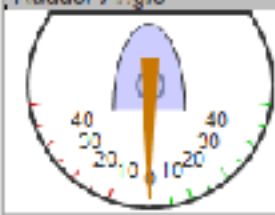
COG

SOG

True Wind Dir & Speed



Rudder Angle



COG ---

50 49.2391 N 001 18.6171 W

109° 173 m

Scale 1500 (5.1K)

